



Developments at GPS PE Pipe Systems

Graham Wright
Head of Gas Sales

Innovation in PE Pipe Systems

an *OAliaxis* company



GPS PE Pipe Systems

Innovation in the Gas Industry

- Over 30 years supply to the UK Gas Industry
- Introduced Rigidex PE80 polymer
- First with Electrofusion fittings
- First with 7 Bar PE Pipe Systems
- Multilayer Pipe System

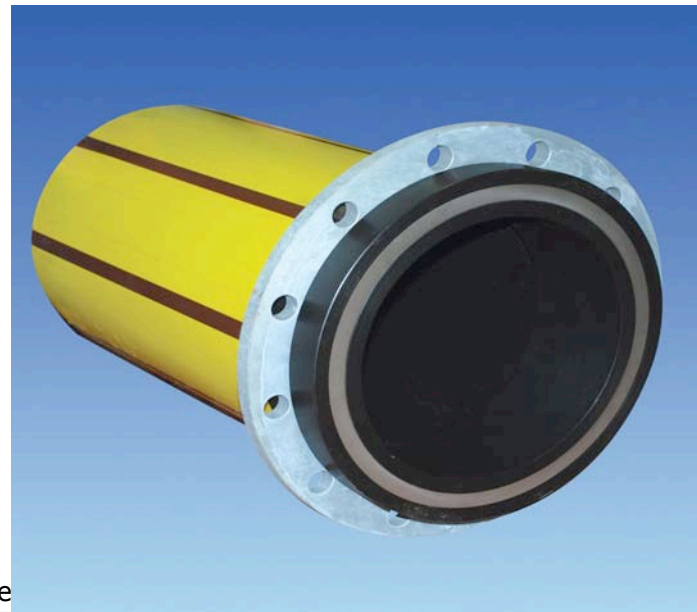
The logo features a blue triangle pointing right, followed by the text 'SECURA-LINE' in a large, bold, black, sans-serif font. Below this, the words 'PEELABLE PIPE' are written in a smaller, bold, blue, sans-serif font.

- Easy peelable outer PP coating-no scraping for electrofusion
- Outer protection in pipe bursting
- Available from 250mm to 500mm
- Approved to GIS/PL2:Part 2
- For use up to 2 Bar medium pressure network



The logo for SLIMFLANGE, featuring a blue triangle pointing right followed by the word 'SLIMFLANGE' in a large, bold, black, sans-serif font. Below this, the phrase 'SIZE-FOR-SIZE CONNECTIONS' is written in a smaller, bold, blue, sans-serif font.

- Only compliant PE flange to give a size-for-size connection
- Size range 250, 315, 355, 450 & 500mm
- Approved against GIS/PL2:Part6 & GIS/PL3
- No need to upsize on valves
- Lightweight
- Cost effective



Innovation in PE Pipe Systems

- For use on medium pressure services – no isolation valve
- Approved against GIS/EFV1 and field tested
- Covers pressure range 75mBar to 2 Bar
- Available in sizes: 32x25mm and 32mm coupler





Low Ovality PE80 Yellow Mains Coils

- GIS/PL2-2:2006 allows up to 15% ovality.
- Issues over electrofusion jointing of coils.
- GPS investment in new low ovality coilers.
- For 125mm/180mm SDR17.6 ovality has been reduced to under 5%.



New large electrofusion Couplers

- “Slide on” design.
- Reduced bore tolerance
- New improved coupler profile
- Better melt flow control
- PE80 Yellow.
- Approved against GIS PL2-4



Visit our stand and learn more

- Talk to us on our stand:
- More about **Secura-Line** Pipe & Fittings
- More about cost & weight savings with **SlimFlanges.**
- More about **Excess Flow Valves.**
- More about **Low Ovality Coils**
- More about **“Slide On” large ef Couplers**